

The logo features a large, dark blue oval with a lighter blue gradient on the left side. Inside this oval, there is a smaller, bright blue oval with a white outline, positioned in the upper left quadrant. The text "DELTA STEEL" is written in a bold, white, sans-serif font with a black outline, centered horizontally across the middle of the dark blue oval.

DELTA STEEL



ABOUT US?

DELTA STEEL is a company located in Brescia north of Italy.

Our firm has solid experience in the field of production and plants related to the iron and steel industry, as well as metallurgy and mechanics in general.

MISSION

Our Mission is to commit with our customers to give a 24/7 service, either on commercial or on technical side.

We offer a wide range of products made through a process that covers all stages of the production cycle, construction, machining, and assembly that are carried out internally in the iron industry, having permanent confidence in our human resources, helping us with the technology, we strive to meet the needs of our customers with the aim of establishing lasting business relationships.

VISION

DELTA STEEL is projected as a leading and recognized company worldwide for the provision of excellent services, teamwork, characterized by providing a quality product, generating trust, an excellent reputation to our clients and being able to consolidate ourselves in the market as the best nationally and internationally, all this aimed at sustained development without forgetting the importance of comprehensive safety and occupational health of our staff.



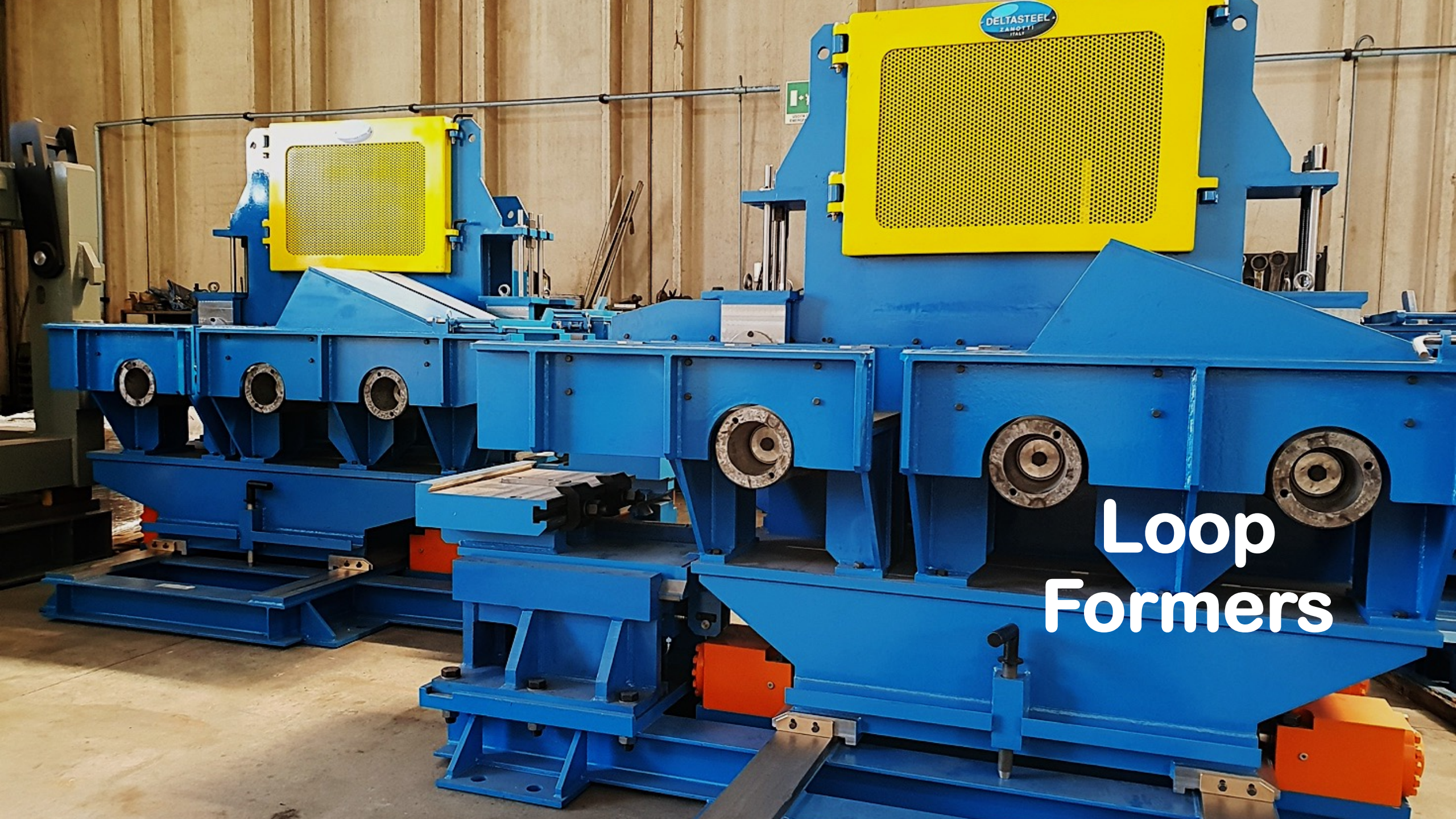
Housingless Stands

Rolling Stand



Quenching Boxes





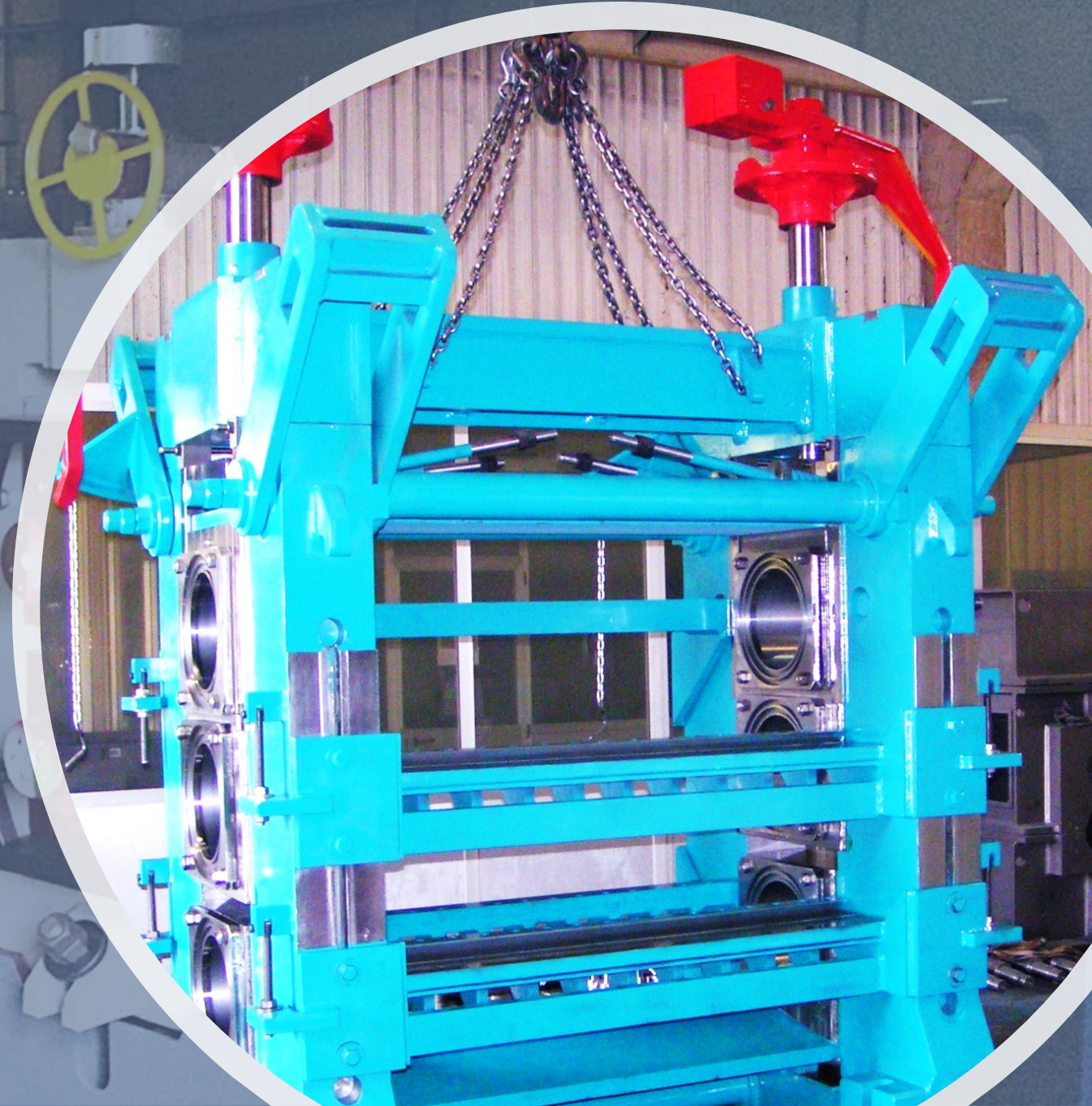
DELTA STEEL
ZAROTTI
ITALY

Loop
Formers

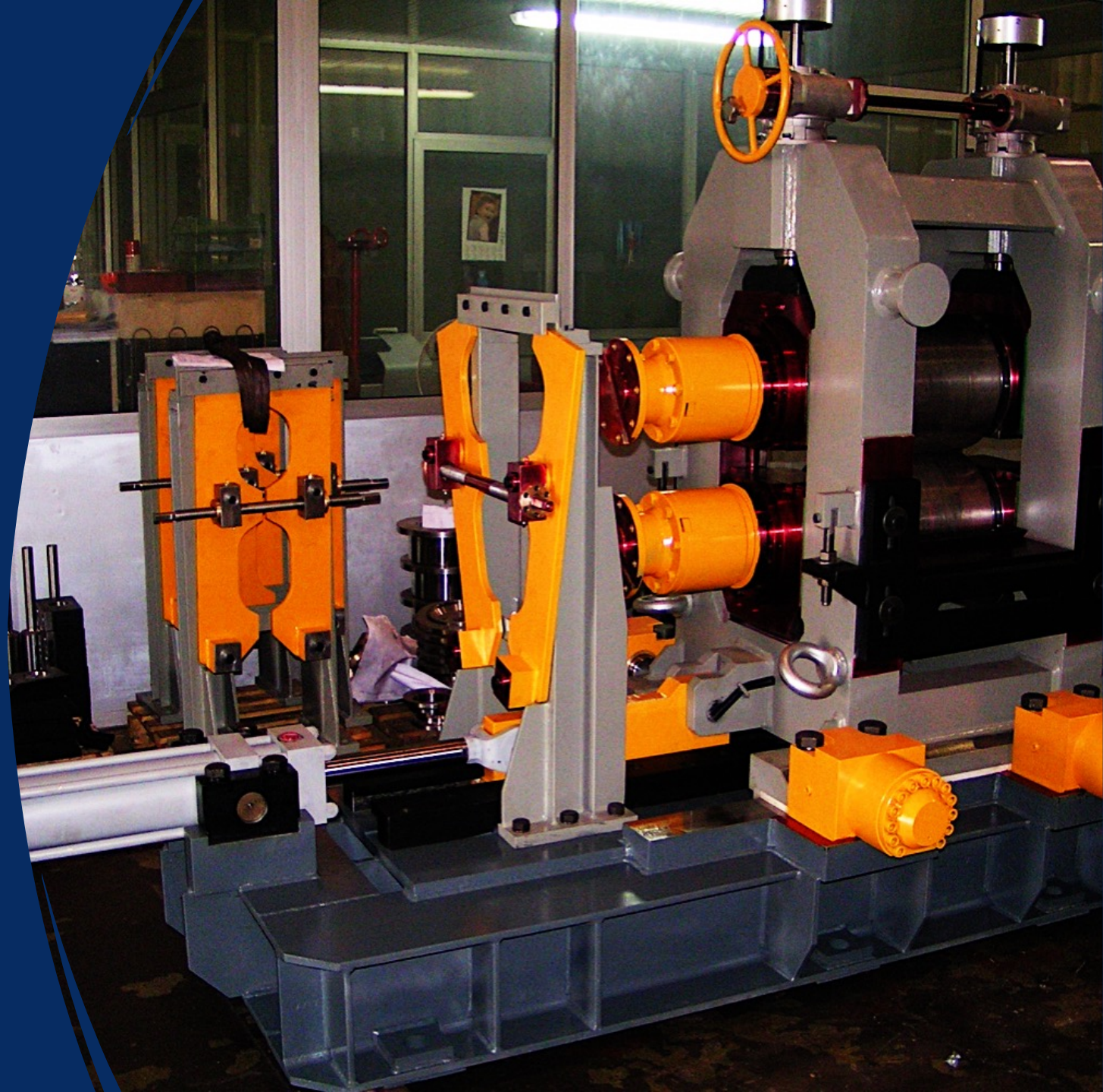
Loop Formers

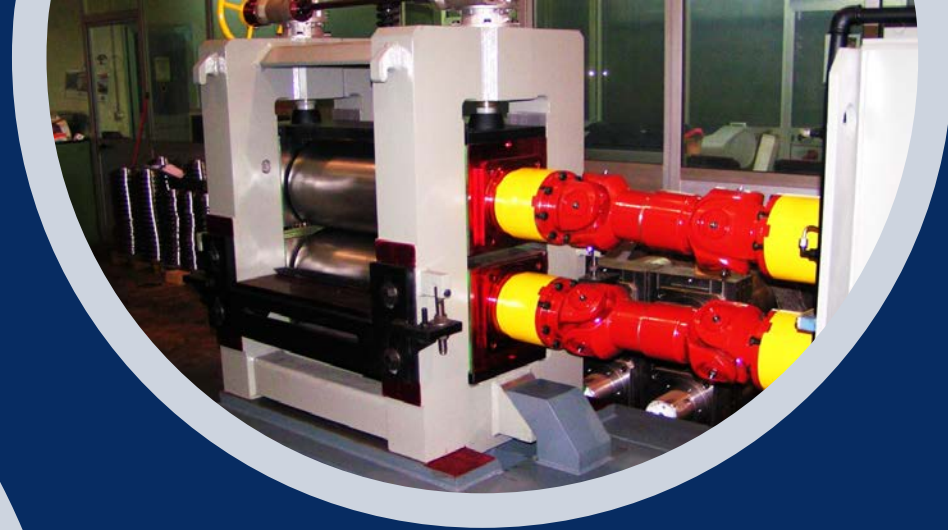
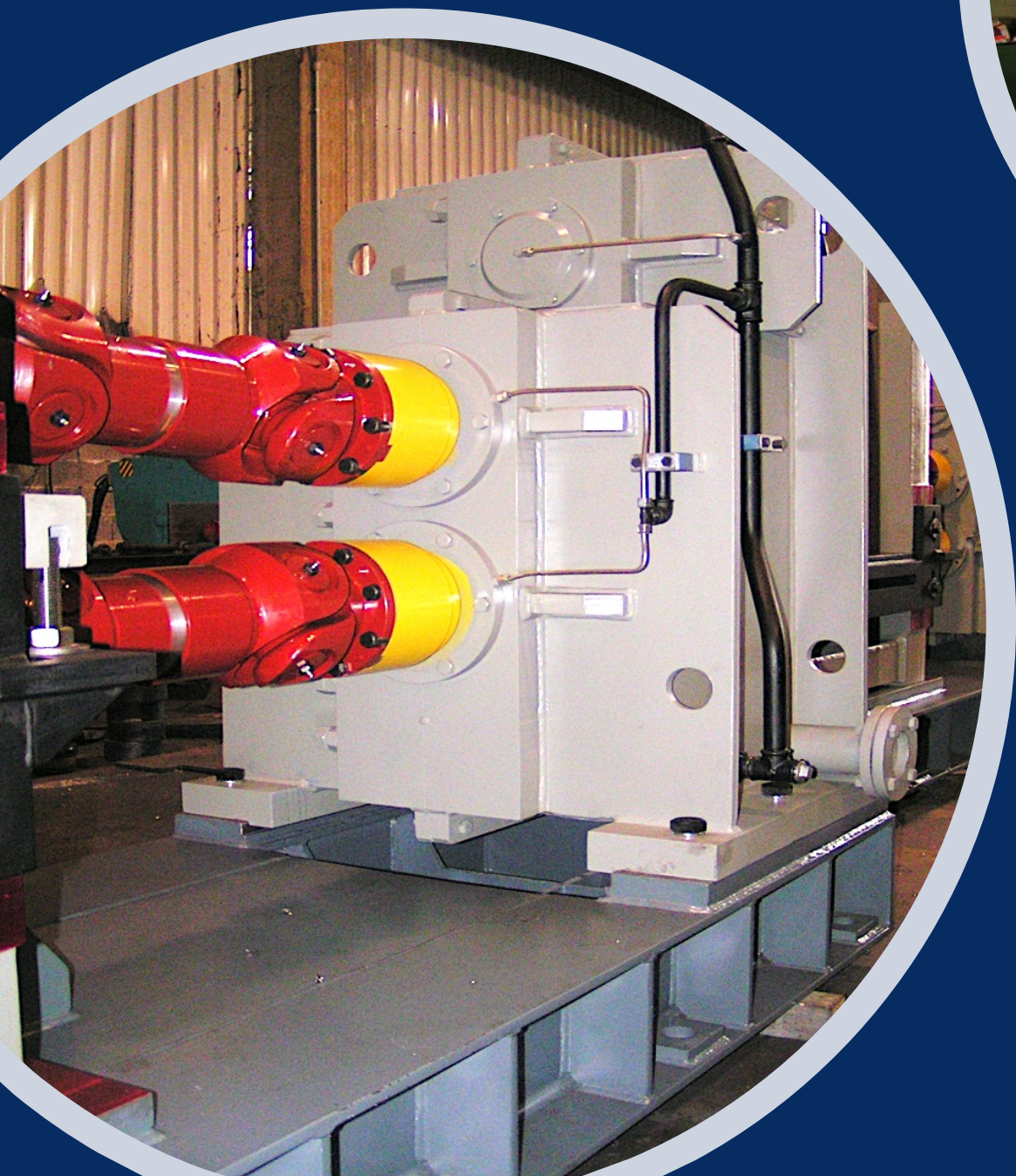


Housing Stands



Housing Stand





Housing Stand



Robot for Roller Assemblies



Workshop Equipment

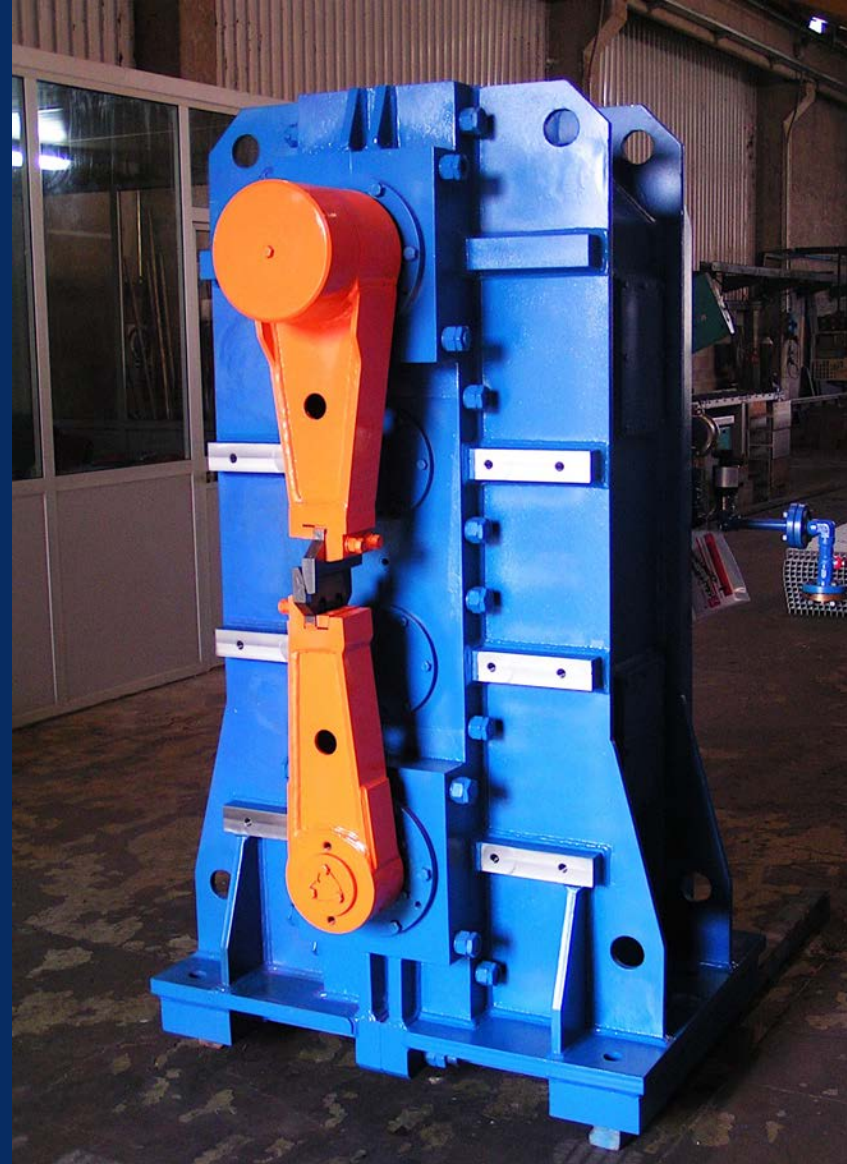


**Intermediate
Shear with
Safety Shield**



Shears

Shear





Intermediate Mill Shears



Rotary Shear

Cooling Bed Carriage System



Tail Brake

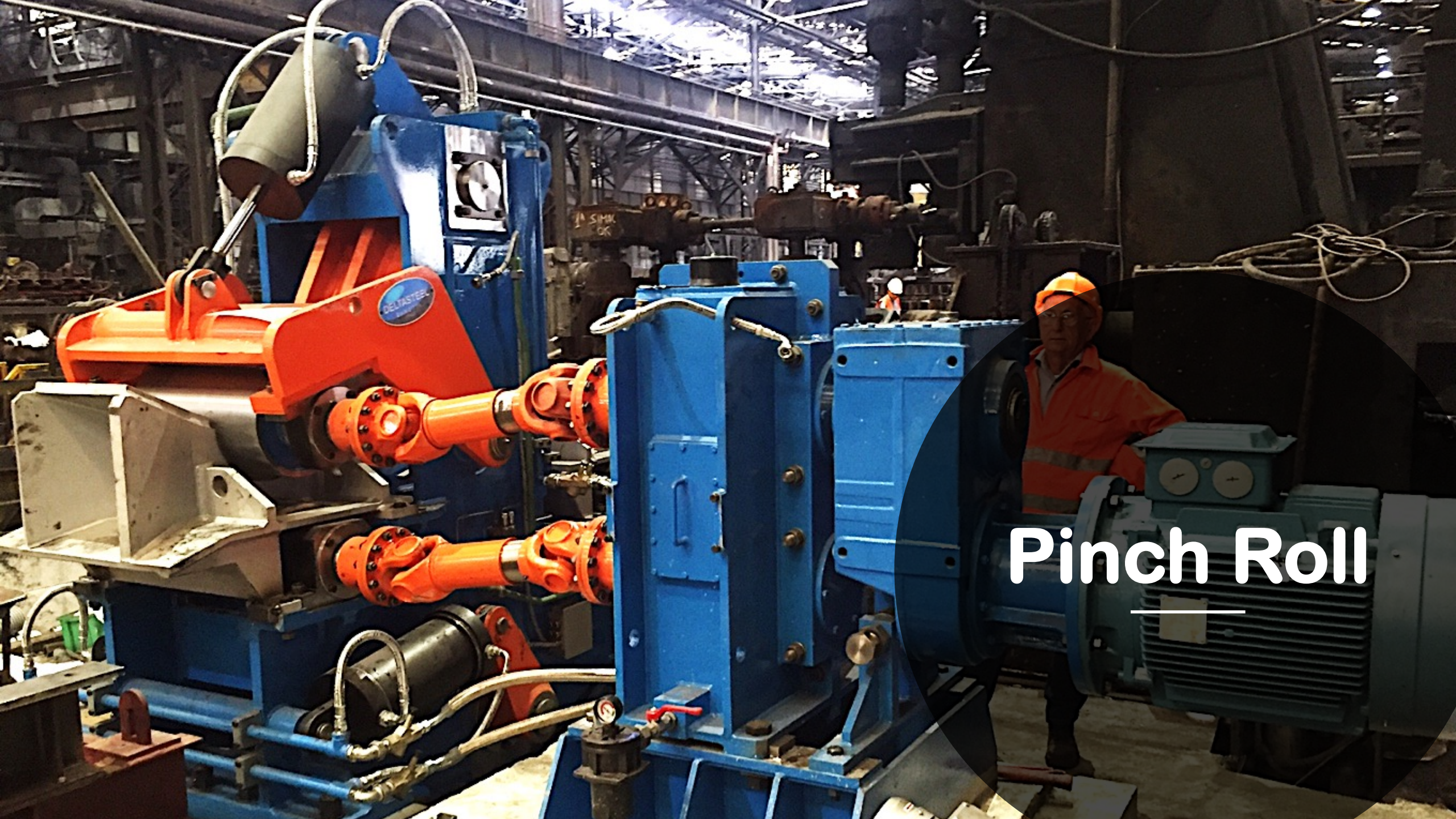


Roller Tables



Chain Transfer System Handling Area





Pinch Roll



Equipment for Steel Plant

Production Machines and Complete Plants



Meltshop

DELTA
ZANOTTI
ITALY



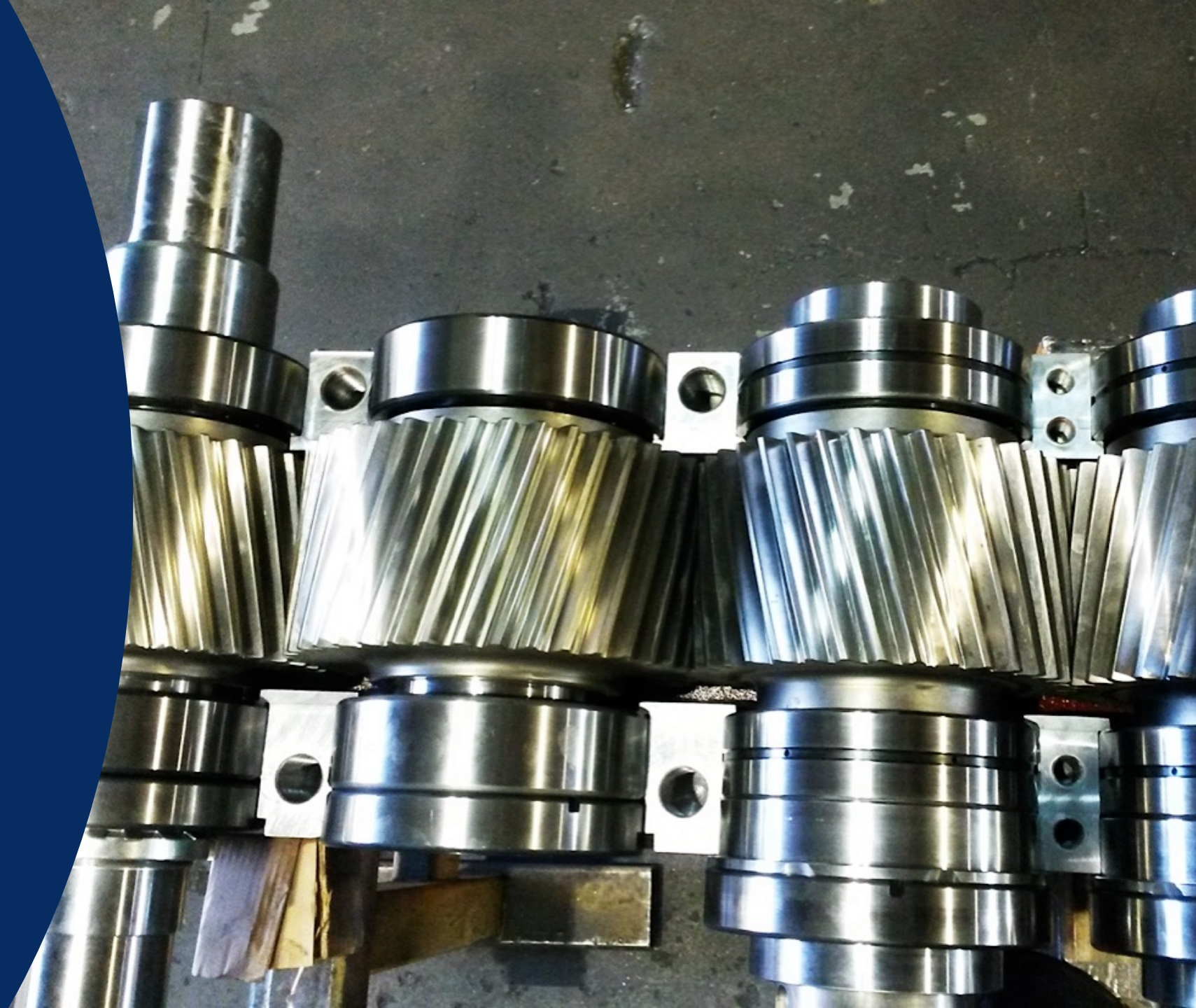
High Quality Products



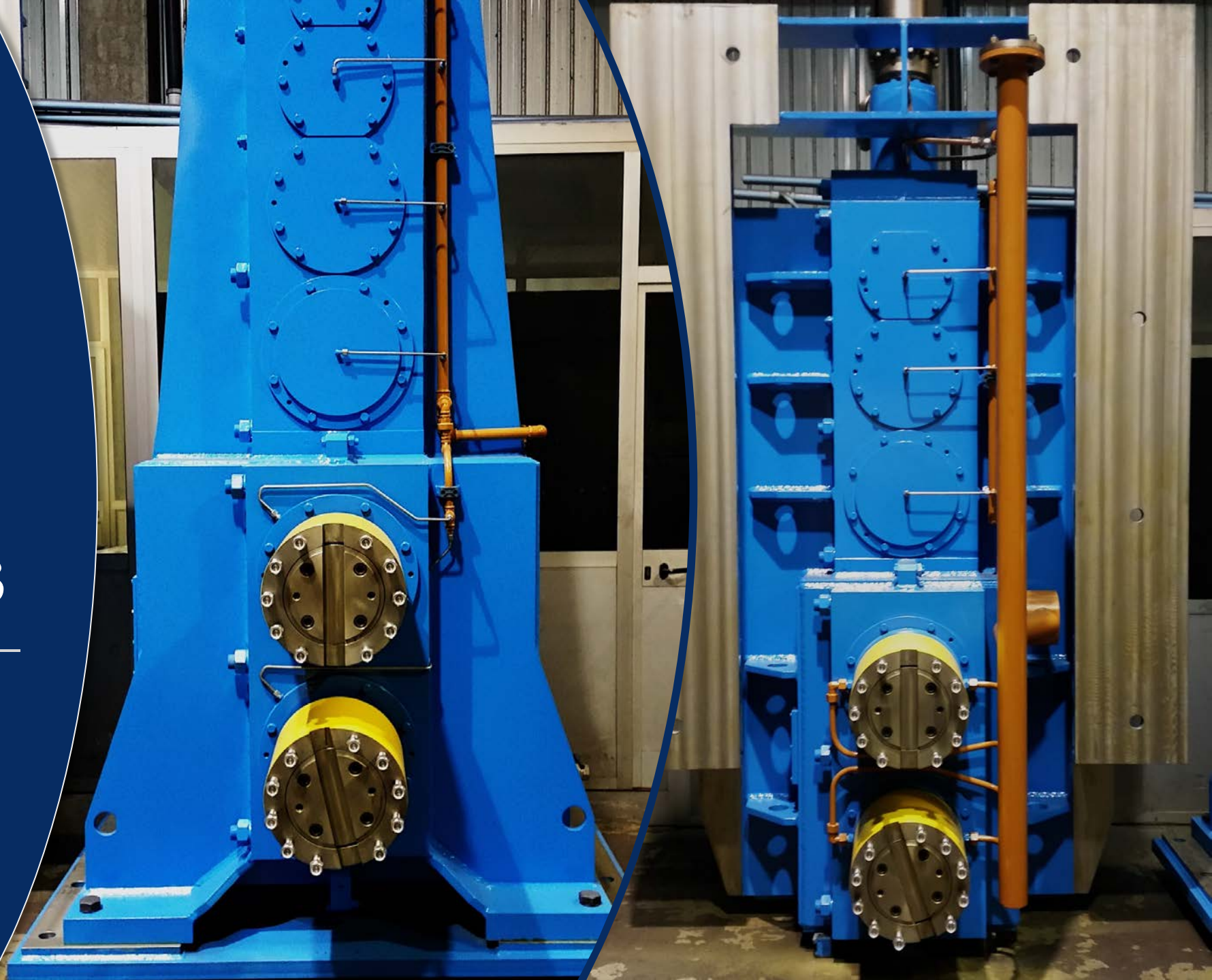


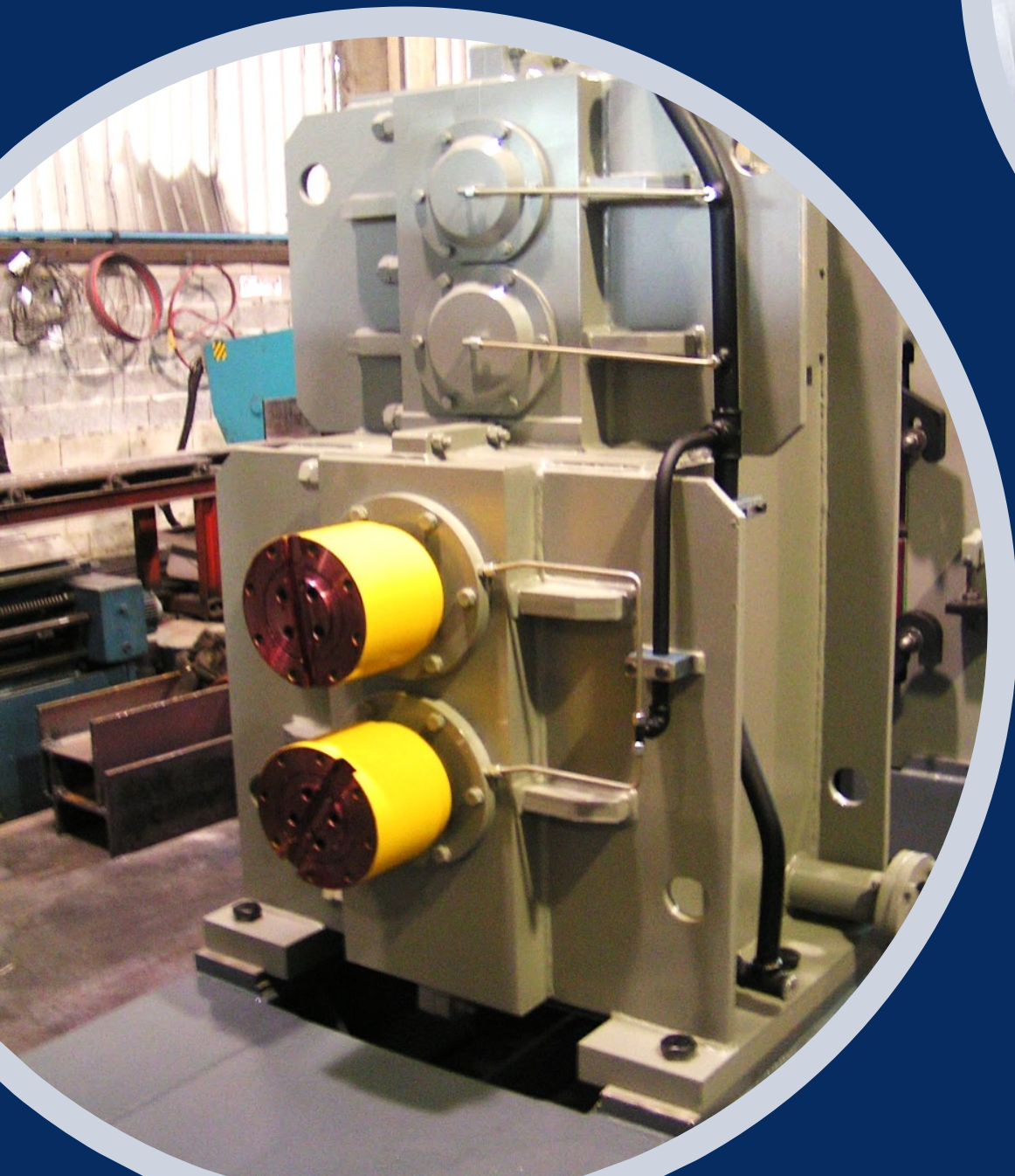
**Gearbox
Assembling**

Stand Gearbox



Gearboxes

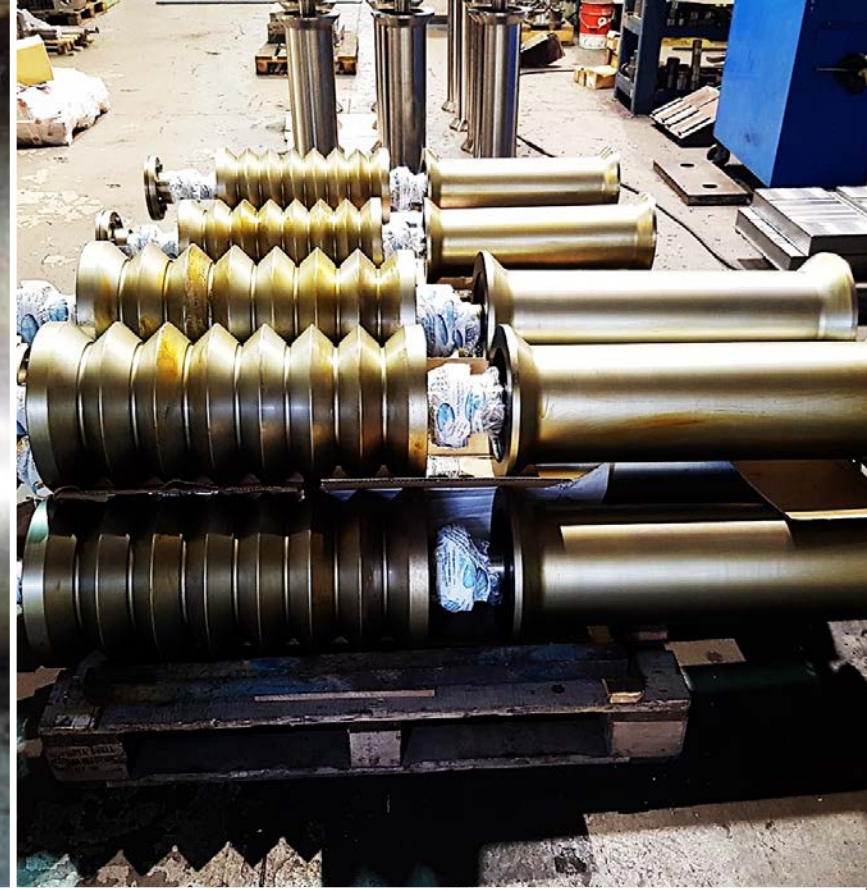
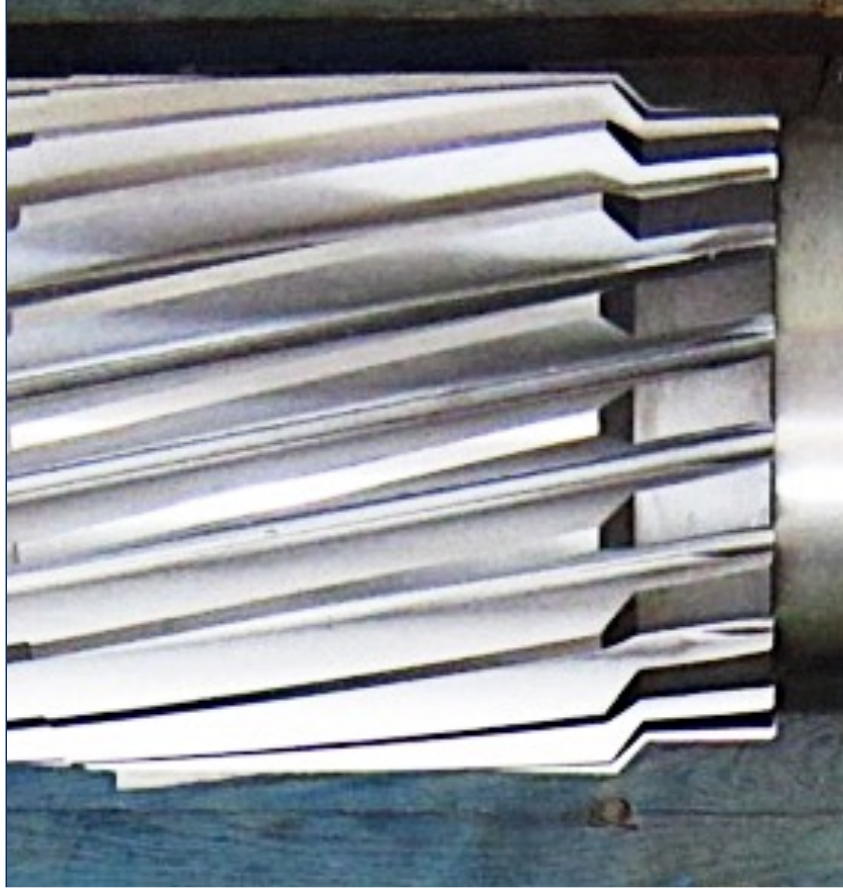




Gearboxes

Bevel Gear





Various Spares

Sizing Stands Refurbishing



DELTASTEEL SRL

Via F.lli Lechi, 15
25121 BRESCIA (BS), ITALY
Tel. +39 335 1836757
sales@deltasteelsrl.com
<http://deltasteelsrl.com>

